

Bienville Parish Dropout Profile



Prepared for
Louisiana's Promise State Dropout Summit
October 28, 2008

Prepared by
Cecil J. Picard Center for Child Development and Lifelong Learning
University of Louisiana at Lafayette

Table of Contents:

Index of Risk Factors.....3

Dropout Trends.....4

Demographics.....5

- Educational Attainment
- Free/Reduced Lunch
- Unemployment Rate
- Income and Poverty
- Revenues per Pupil
- Expenditures per Pupil

Student Ethnicity.....6

Teacher Salaries.....6

Risk Factors.....7

Index of Risk Factors:

School Performance

- Low Achievement (pages 12-15)
- Retention/Overage for Grade (page 7)

School Behavior

- Misbehavior (page 8)
- Early Aggression

Early Adult Responsibilities

- High Number of Work Hours (page 10)
- Parenthood (page 10)

School Engagement

- Poor Attendance (page 10)
- Low Educational Expectation
- Lack of Effort
- Low Commitment to School
- No Extracurricular Participation

Family Background Characteristics

- Low Socioeconomic Status (page 11)
- High Family Mobility
- Low Education Level of Parents
- Large Number of Siblings
- Not Living with Both Natural Parents
- Family Disruption

Family Engagement/Commitment to Education

- Low Education Expectation (page 10)
- Sibling Has Dropped Out
- Low Contact with School
- Lack of Conversation About School

Social Attitudes, Values and Behaviors

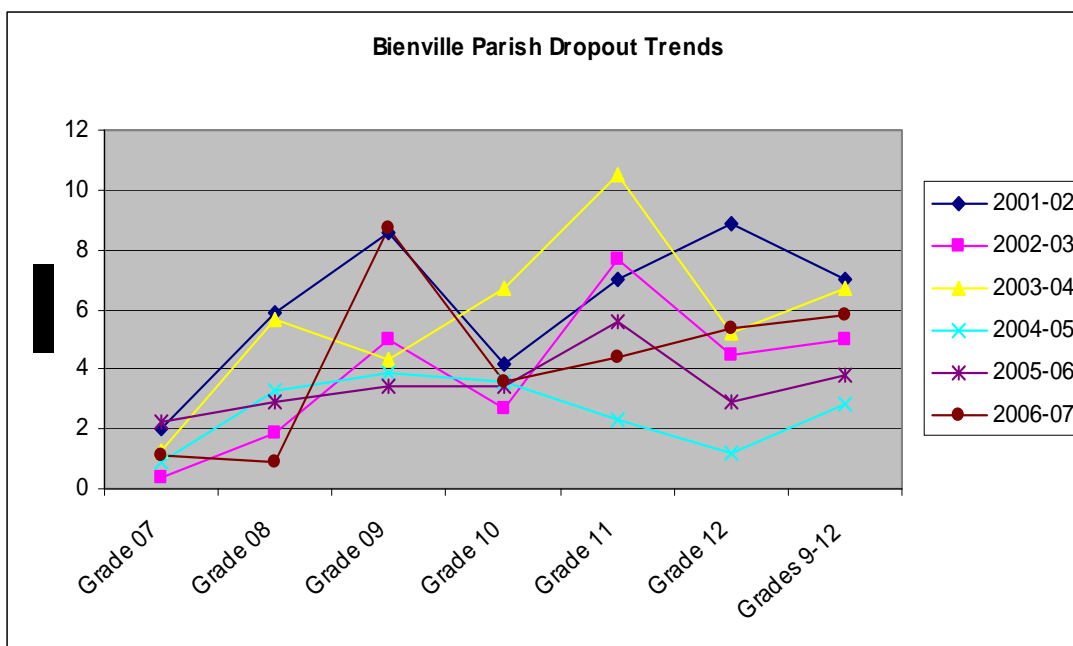
- High-Risk Peer Group
- High-Risk Social Behavior
- Highly Active Outside of School

Individual Background Characteristics

- Has a Learning Disability or Emotional Disturbance

Bienville Parish Dropout Trends (Percentages)

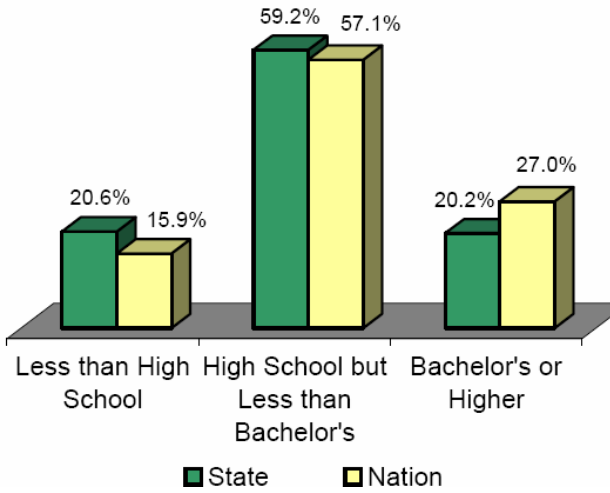
Year	Grade 7	Grade 8	Grade 9	Grade 10	Grade 11	Grade 12	Grades 9-12
2001-02	2	5.9	8.6	4.2	7	8.9	7
2002-03	0.4	1.9	5	2.7	7.7	4.5	5
2003-04	1.3	5.7	4.3	6.7	10.5	5.2	6.7
2004-05	0.9	3.3	3.9	3.6	2.3	1.2	2.8
2005-06	2.2	2.9	3.4	3.4	5.6	2.9	3.8
2006-07	1.1	0.9	8.7	3.6	4.4	5.4	5.8



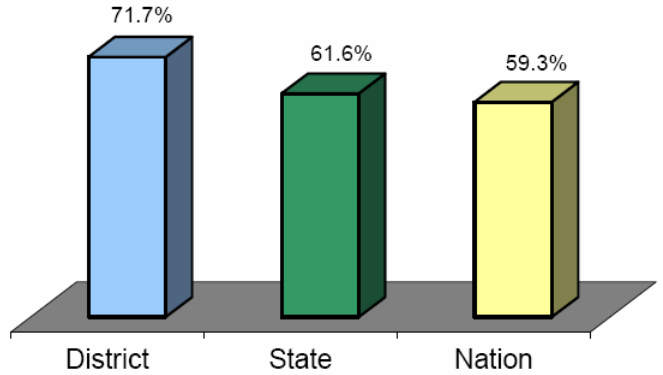
Louisiana Dropout Trends (Percentages)

	2001-02	2002-03	2003-04	2004-05	2005-06	2006-07
Grade 7	1.5	1.7	1.4	1.5	2.6	1.6
Grade 8	3.3	3.6	3.4	3.3	4.2	4.2
Grade 9	6.3	7.6	7.7	7.6	7.8	7.8
Grade 10	6.8	6.5	6.6	6.2	6.2	6.2
Grade 11	6.4	6.3	6.3	6.4	6.4	6.4
Grade 12	7.0	7.5	9.0	7.6	7.1	7.1
Louisiana State Total (All Grades)	6.6	7.0	7.4	7.0	6.9	6.9

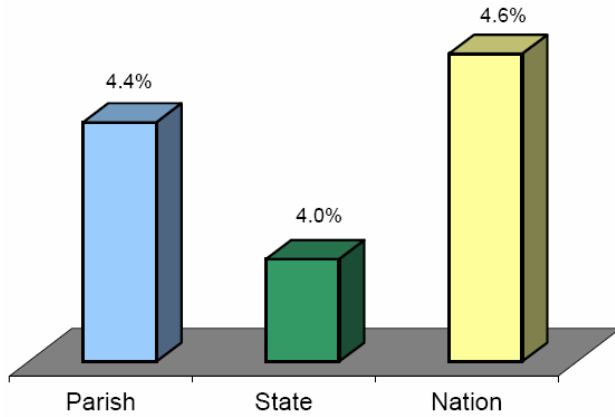
Educational Attainment at State and National Levels



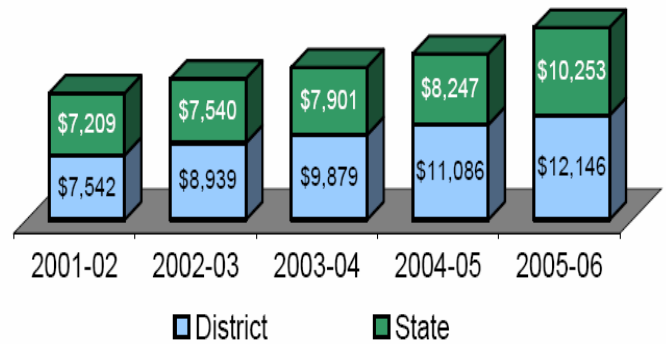
Student Participation in the Federal Free or Reduced Price Lunch Program



Unemployment Rate



Revenues Per Pupil (Elementary/Secondary Enrollment)



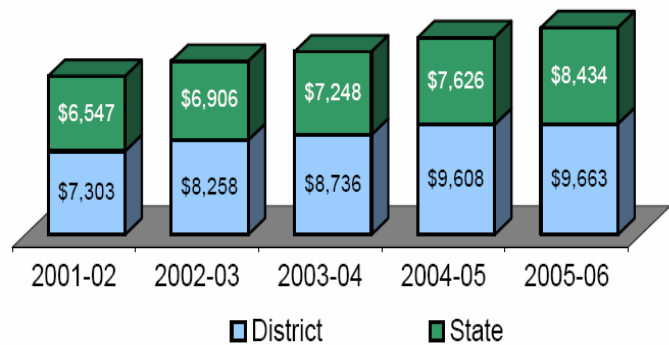
Income and Poverty

	Parish	State	Nation
Median Household Income	\$26,320	\$35,216	\$44,334
Persons Below Poverty	22.5%	19.2%	12.7%
Children Below Poverty	34.0%	27.8%	18.3%

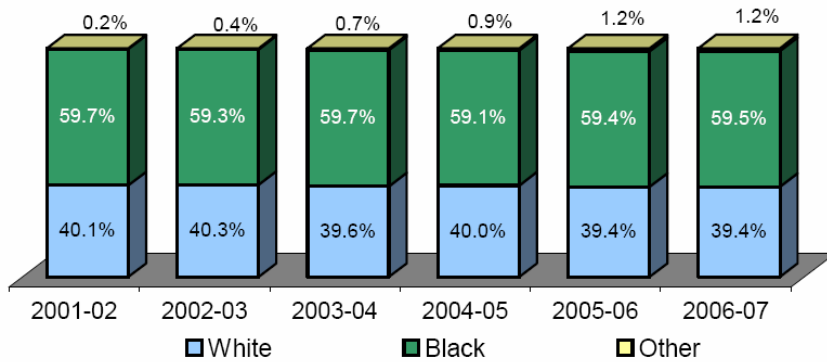
Teenage Birth and Single Motherhood

	Parish	State	Nation
Teenage Birth Rate	15.1%	14.4%	10.0%
Female Householders	12.5%	16.1%	12.5%

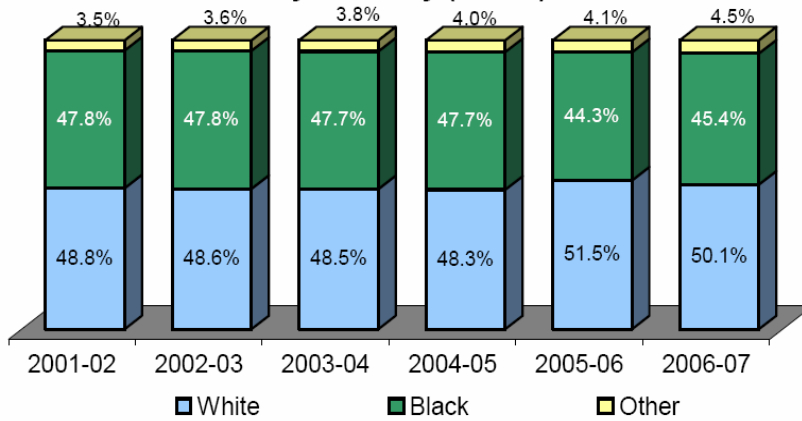
Expenditures Per Pupil (Elementary/Secondary Enrollment)



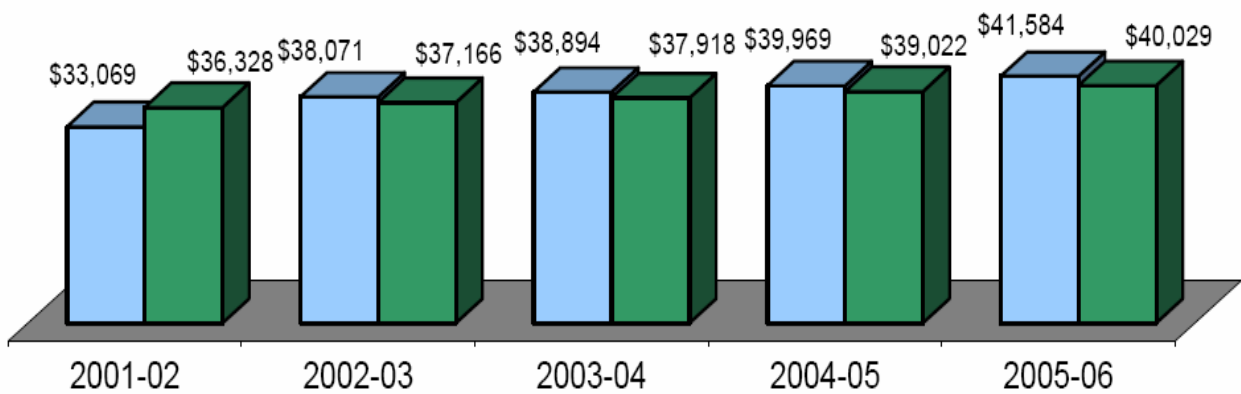
District's Public Student Population by Ethnicity (PK-12)



State's Public Student Population by Ethnicity (PK-12)



Average Classroom Teacher Salary

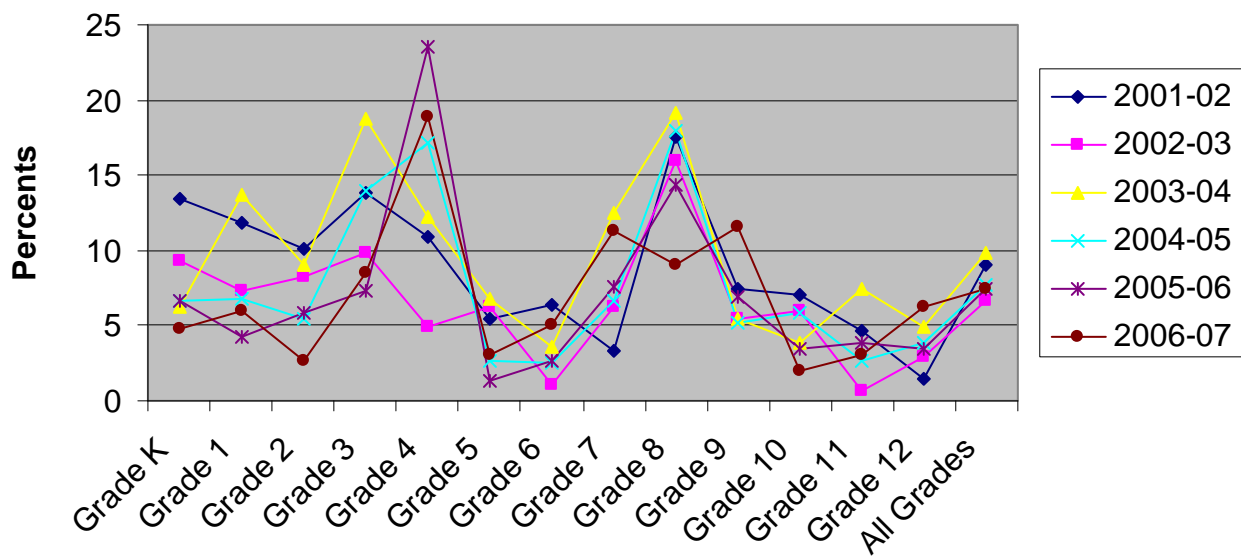


Risk Factors: Student Retention

Bienville Parish Student Retention

	2001-02		2002-03		2003-04		2004-05		2005-06		2006-07	
	%	#	%	#	%	#	%	#	%	#	%	#
Grade K	13.4	24	9.3	17	6.3	11	6.7	12	6.6	10	4.8	8
Grade 1	11.8	22	7.3	13	13.7	25	6.8	13	4.3	8	6	9
Grade 2	10.1	21	8.2	14	9	16	5.4	9	5.9	11	2.6	5
Grade 3	13.8	31	9.9	21	18.7	35	13.9	28	7.3	13	8.5	16
Grade 4	10.9	22	4.9	10	12.3	25	17.2	31	23.5	48	18.9	39
Grade 5	5.4	10	6.2	12	6.8	11	2.7	5	1.3	2	3	5
Grade 6	6.4	11	1	2	3.6	7	2.5	5	2.7	5	5.1	8
Grade 7	3.3	7	6.2	11	12.5	25	6.7	14	7.6	15	11.3	22
Grade 8	17.5	35	15.9	33	19.2	37	18	36	14.4	30	9	19
Grade 9	7.5	14	5.4	9	5.5	9	5.2	8	6.9	12	11.6	21
Grade 10	7.1	12	6	11	3.9	6	5.8	10	3.4	5	2	3
Grade 11	4.6	7	0.7	1	7.5	12	2.6	4	3.8	6	3	4
Grade 12	1.5	2	2.9	4	4.9	8	3.9	6	3.4	5	6.3	10
All Grades	9.1	218	6.7	158	9.8	227	7.7	181	7.5	170	7.5	169

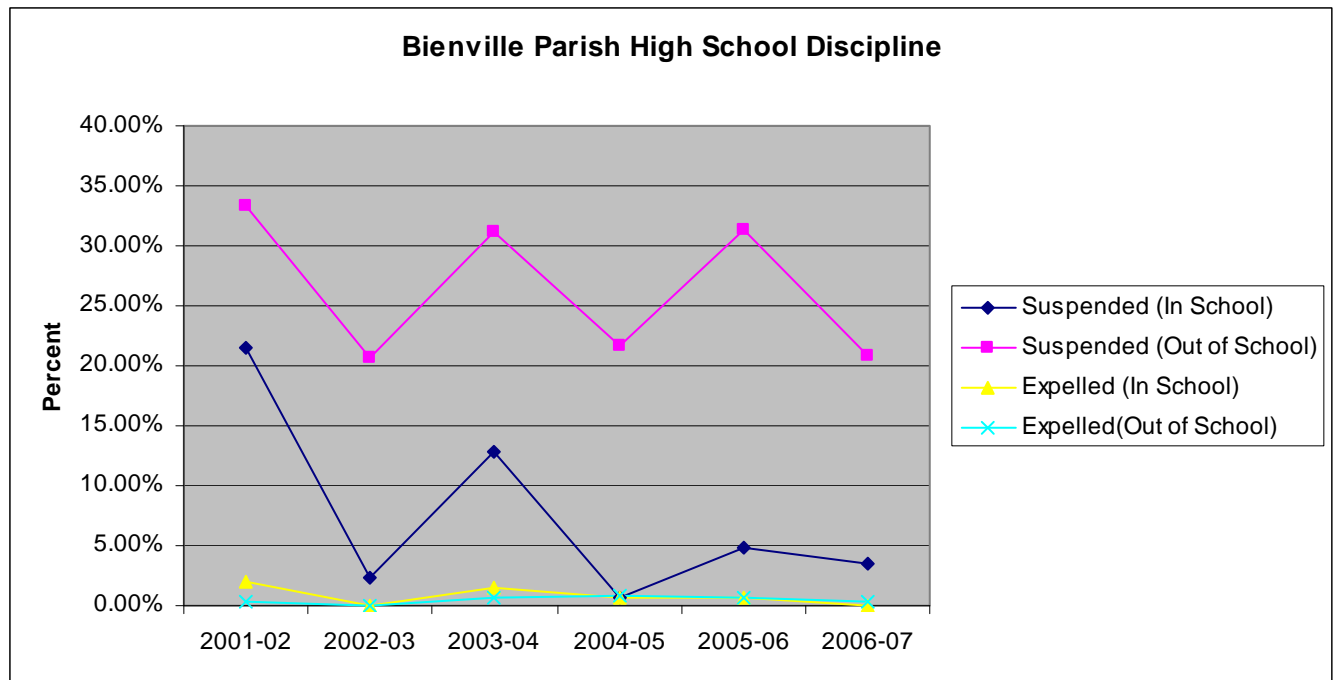
Bienville Parish Dropout Trends



Risk Factor: Student Discipline

Bienville Parish—High School **Discipline**

School Year	% Suspension (In-School)	# Suspension (In-School)	% Suspension (Out-of-School)	# Suspension (Out-of-School)	% Expulsion (In-School)	# Expulsion (In-School)	% Expulsion (Out-of-School)	# Expulsion (Out-of-School)
2001-02	21.47%	126	33.39%	196	2.04%	12	0.34%	2
2002-03	2.39%	14	20.65%	121	0.00%		0.00%	
2003-04	12.83%	77	31.17%	187	1.50%	9	0.67%	4
2004-05	0.71%	4	21.63%	122	0.71%	4	0.89%	5
2005-06	4.75%	28	31.41%	185	0.68%	4	0.68%	4
2006-07	3.42%	19	20.86%	116	0.00%	0	0.36%	2

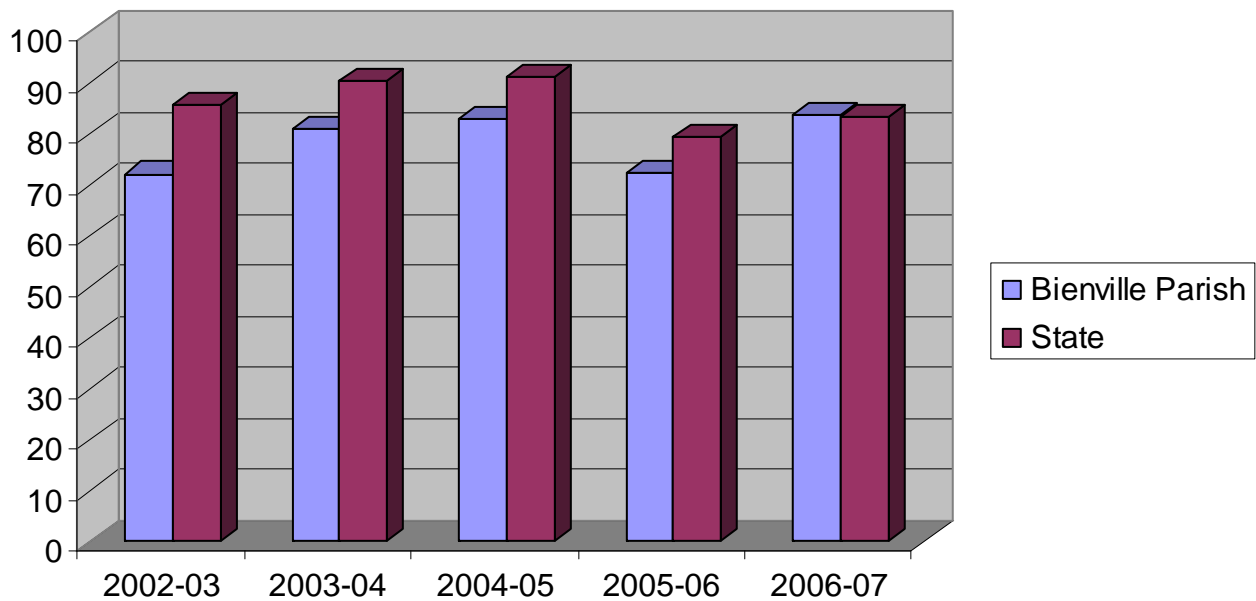


Teacher Quality

Highly Qualified Teachers (Percentages)

	2002-03	2003-04	2004-05	2005-06	2006-07
Bienville Parish Core Classes Taught by Highly Qualified Teachers	72.2	81	83	72.4	83.9
Louisiana Core Classes Taught by Highly Qualified Teachers	85.6	90.5	91.4	79.6	83.5

Bienville Parish Highly Qualified Teachers



Risk Factor: Student Engagement and Family Background

Bienville Parish **Dropout Reasons**

	Count	Percent
No Reason Given	34	69.4
Dislike of School Experience	1	2.0
Employment	5	10.2
Entered Criminal Justice System	1	2.0
Military	1	2.0
Needed at Home	2	4.1
No Reason Given	5	10.2
Total	49	100

Bienville Dropout **Truancy**

	Frequency	Percent
Non-Truant	23	46.9
Truant	26	53.1
Total	49	100
Louisiana Truant-Dropout Total	5,890	36.0

Bienville Parish Dropout: **Options Program Participation**

	Count	Percent
Non-Options Participant	42	85.7
Option 3 (GED Program)	7	14.3
Total	49	100.0
Louisiana Dropout Option 3 Participants	1924	11.7

Bienville Dropout **Homelessness**

	Bienville Counts	Bienville Percent	Louisiana Dropout Counts	Louisiana Dropout Percents
Non-Homeless	49	100	15,834	96.6
Hotels/Motels	0	0	8	.0
Shelters	0	0	28	.2
Sharing Housing with Others	0	0	412	2.5
Unsheltered/FEMA	0	0	55	.3
Total	49	100	16,383	100

Risk Factor: Family Characteristics

Bienville Parish Dropouts by **Gender**

	Count	Percent
Female	33	44.6
Male	41	55.4
Total	74	100

Louisiana Dropouts by **Gender**

	Count	Percent
Female	6,686	40.8
Male	9,697	59.2
Total	16,383	100

Bienville Parish Dropout **Poverty**

	Count	Percent
Paid Lunch	30	40.5
Free Lunch	40	54.1
Reduced Lunch	4	5.4
Total	74	100

Louisiana Dropout **Poverty**

	Count	Percent
Paid Lunch	6,883	42.0
Free Lunch	8,954	54.7
Reduced Lunch	546	3.3
Total	16,383	100

Bienville Parish Dropouts by **Ethnicity**

	Count	Percent
American Indian/ Alaskan Native	0	0
Asian/Pacific Islander	0	0
African American	42	56.8
Hispanic	0	0
Caucasian	32	43.2
Total	74	100

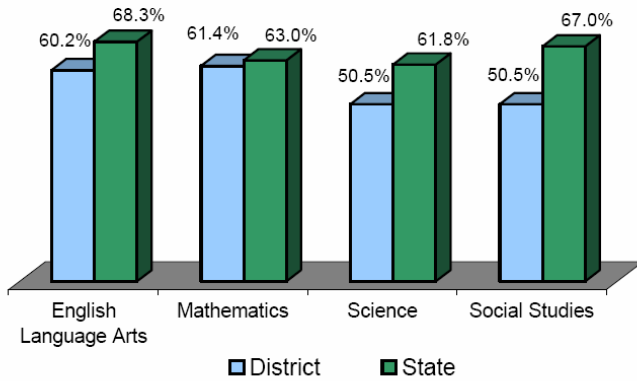
Louisiana Dropouts by **Ethnicity**

	Count	Percent
American Indian/ Alaskan Native	120	.7
Asian/Pacific Islander	164	1.0
African American	10,439	63.7
Hispanic	452	2.8
Caucasian	5,208	31.8
Total	16,383	100

Risk Factor: School Performance

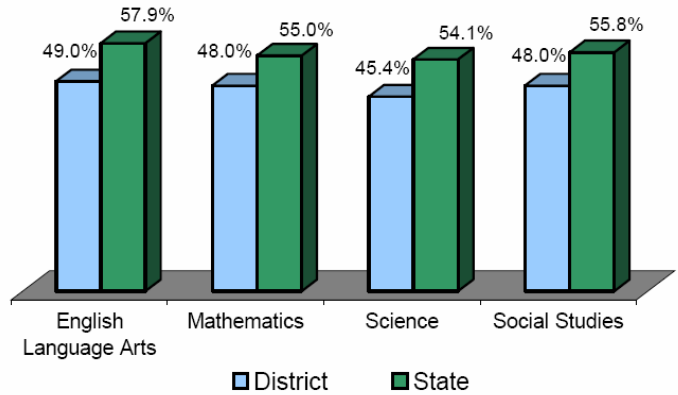
Grade 4 LEAP Test Results

Percent Scoring at Basic & Above
(2006-2007)



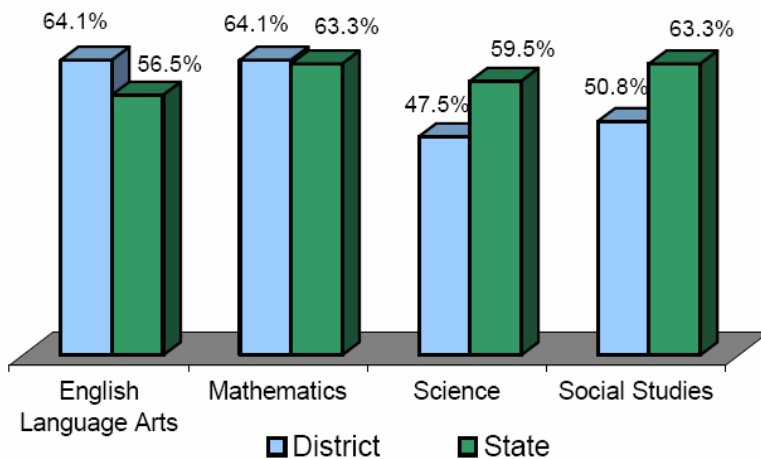
Grade 8 LEAP Test Results

Percent Scoring at Basic & Above
(2006-2007)



GEE Test Results

Percent Scoring at Basic & Above
(2006-2007)



District Indicator Results

Student Achievement

Grade 4 LEAP Test Results													
		2001-02		2002-03		2003-04		2004-05		2005-06		2006-07	
		Percent	Number	Percent	Number	Percent	Number	Percent	Number	Percent	Number	Percent	Number
District													
English Language Arts													
Advanced		0.9	2	0.5	1	0.0	0	2.5	5	1.0	2	3.6	7
Mastery*		13.5	29	9.0	19	11.4	21	11.3	23	11.7	24	14.3	28
Basic		38.1	82	42.9	90	45.7	84	42.9	87	47.3	97	42.3	83
Approaching Basic		33.0	71	32.9	69	26.1	48	26.6	54	24.9	51	24.5	48
Unsatisfactory		14.4	31	14.8	31	16.8	31	16.7	34	15.1	31	15.3	30
Mathematics													
Advanced		2.3	5	1.4	3	1.1	2	2.5	5	2.4	5	2.6	5
Mastery*		8.8	19	11.0	23	8.7	16	9.4	19	15.6	32	13.4	26
Basic		38.6	83	40.0	84	44.0	81	36.0	73	47.8	98	45.4	88
Approaching Basic		26.0	56	27.1	57	23.4	43	30.0	61	20.5	42	21.6	42
Unsatisfactory		24.2	52	20.5	43	22.8	42	22.2	45	13.7	28	17.0	33
Science													
Advanced		1.9	4	1.0	2	0.5	1	3.4	7	1.0	2	0.0	0
Mastery*		7.0	15	6.7	14	7.1	13	5.4	11	7.3	15	7.7	15
Basic		38.6	83	36.2	76	39.1	72	45.8	93	41.0	84	42.8	83
Approaching Basic		36.7	79	42.9	90	42.4	78	33.5	68	31.2	64	33.5	65
Unsatisfactory		15.8	34	13.3	28	10.9	20	11.8	24	19.5	40	16.0	31
Social Studies													
Advanced		1.9	4	0.5	1	0.0	0	0.5	1	0.0	0	0.0	0
Mastery*		5.1	11	6.7	14	8.2	15	5.4	11	4.9	10	6.7	13
Basic		37.2	80	41.0	86	41.8	77	40.9	83	44.9	92	43.8	85
Approaching Basic		33.0	71	28.6	60	28.8	53	31.5	64	24.9	51	26.3	51
Unsatisfactory		22.8	49	23.3	49	21.2	39	21.7	44	25.4	52	23.2	45

District Indicator Results *Student Achievement*

Grade 8 LEAP Test Results													
		2001-02		2002-03		2003-04		2004-05		2005-06		2006-07	
		Percent	Number	Percent	Number	Percent	Number	Percent	Number	Percent	Number	Percent	Number
District English Language Arts	Advanced	2.0	4	0.0	0	0.0	0	0.0	0	1.0	2	0.0	0
	Mastery*	7.7	15	12.7	21	7.9	15	13.3	26	6.0	12	10.2	20
	Basic	26.0	51	36.7	61	34.2	65	25.0	49	38.2	76	38.8	76
	Approaching Basic	49.0	96	36.7	61	41.1	78	42.9	84	41.7	83	36.2	71
	Unsatisfactory	15.3	30	13.9	23	16.8	32	18.9	37	13.1	26	14.8	29
Mathematics													
Advanced	1.0	2	2.4	4	1.1	2	1.0	2	1.5	3	2.6	5	
Mastery*	0.5	1	0.6	1	3.2	6	3.6	7	3.9	8	4.6	9	
Basic	26.4	52	46.4	77	43.7	83	49.0	96	44.3	90	40.8	80	
Approaching Basic	39.6	78	23.5	39	24.2	46	27.6	54	27.1	55	25.0	49	
Unsatisfactory	32.5	64	27.1	45	27.9	53	18.9	37	23.2	47	27.0	53	
Science													
Advanced	1.0	2	0.0	0	0.5	1	0.0	0	1.0	2	1.5	3	
Mastery*	10.7	21	12.7	21	10.5	20	13.3	26	6.8	13	9.7	19	
Basic	20.4	40	34.9	58	29.5	56	21.4	42	29.3	56	34.2	67	
Approaching Basic	44.4	87	34.9	58	36.3	69	42.9	84	40.3	77	28.1	55	
Unsatisfactory	23.5	46	17.5	29	23.2	44	22.4	44	22.5	43	26.5	52	
Social Studies													
Advanced	0.0	0	0.0	0	0.0	0	0.0	0	0.5	1	0.0	0	
Mastery*	3.1	6	4.8	8	4.7	9	5.1	10	3.7	7	10.2	20	
Basic	37.2	73	39.2	65	43.2	82	32.1	63	38.2	73	37.8	74	
Approaching Basic	32.7	64	34.9	58	30.5	58	27.0	53	28.8	55	25.0	49	
Unsatisfactory	27.0	53	21.1	35	21.6	41	35.7	70	28.8	55	27.0	53	

District Indicator Results

Student Achievement

		Graduation Exit Examination (GEE) Results										
		2001-02	2002-03	2003-04	2004-05	2005-06	2006-07					
		Percent	Number	Percent	Number	Percent	Number	Percent	Number	Percent	Number	
District												
English Language Arts												
Advanced	0.5	1	0.0	0	1.7	3	0.7	1	0.0	0	0.0	0
Mastery*	11.0	20	12.6	20	11.0	19	11.6	17	11.7	17	7.2	12
Basic	31.9	58	37.7	60	45.1	78	44.5	65	47.6	69	56.9	95
Approaching Basic	30.8	56	27.7	44	23.7	41	27.4	40	28.3	41	21.6	36
Unsatisfactory	25.8	47	22.0	35	18.5	32	15.8	23	12.4	18	14.4	24
Mathematics												
Advanced	7.1	13	4.4	7	3.0	5	2.8	4	4.1	6	4.2	7
Mastery*	8.2	15	16.5	26	19.0	32	13.8	20	16.6	24	24.0	40
Basic	33.7	62	43.0	68	41.1	69	42.1	61	46.2	67	35.9	60
Approaching Basic	16.8	31	20.3	32	16.7	28	20.0	29	13.8	20	13.2	22
Unsatisfactory	34.2	63	15.8	25	20.2	34	21.4	31	19.3	28	22.8	38
Science												
Advanced	0.6	1	0.6	1	0.0	0	1.3	2	0.8	1	1.5	2
Mastery*	9.3	15	9.8	17	13.2	18	7.3	11	3.1	4	8.0	11
Basic	21.6	35	37.0	64	40.4	55	37.7	57	37.7	49	38.0	52
Approaching Basic	27.2	44	30.1	52	32.4	44	32.5	49	36.9	48	28.5	39
Unsatisfactory	41.4	67	22.5	39	14.0	19	21.2	32	21.5	28	24.1	33
Social Studies												
Advanced	1.2	2	1.7	3	0.7	1	0.7	1	0.0	0	0.0	0
Mastery*	0.0	0	4.0	7	3.0	4	7.3	11	1.5	2	1.5	2
Basic	32.7	53	36.4	63	51.9	70	37.7	57	42.3	55	49.3	67
Approaching Basic	22.2	36	26.0	45	23.0	31	31.8	48	31.5	41	30.9	42
Unsatisfactory	43.8	71	31.8	55	21.5	29	22.5	34	24.6	32	18.4	25