

LOUISIANA'S PROMISE

Dropouts: A Community Issue

Billy Stokes, Ed.D., M.B.A.

Cecil J. Picard Endowed Fellow in
Child Development, Director

Picard Center for Child Development



Why Are Students Dropping Out?



Students who dropped out:

- **Did not like school, felt it was mostly a negative experience**
- **Could not get along with teachers, principals, parents and peers**
- **Could not keep up with school work and did not see the relevance of school work**
- **Was pregnant**
- **Had friends who also dropped out**

Source: Picard Center Focus Groups, October 2008

Why Are Students Dropping Out?



Dropout Risk Factors from the National Dropout Prevention Center:

- Retention/Overage for Grade
- Poor Attendance
- No Extracurricular Participation
- Misbehavior
- Low Education Level of Parents
- Family Disruption
- Low Achievement
- Low Educational Expectation
- Lack of Effort
- Low Commitment to School

What Are the Strongest Predictors of Why Students Drop Out?

- Retention is the strongest predictor of school dropout.
- Truancy, academic failure, out-of-school suspensions and expulsions are predictive of school dropout.
- Early life experiences (income levels and access to high quality preschool) are predictive of dropout prevention.

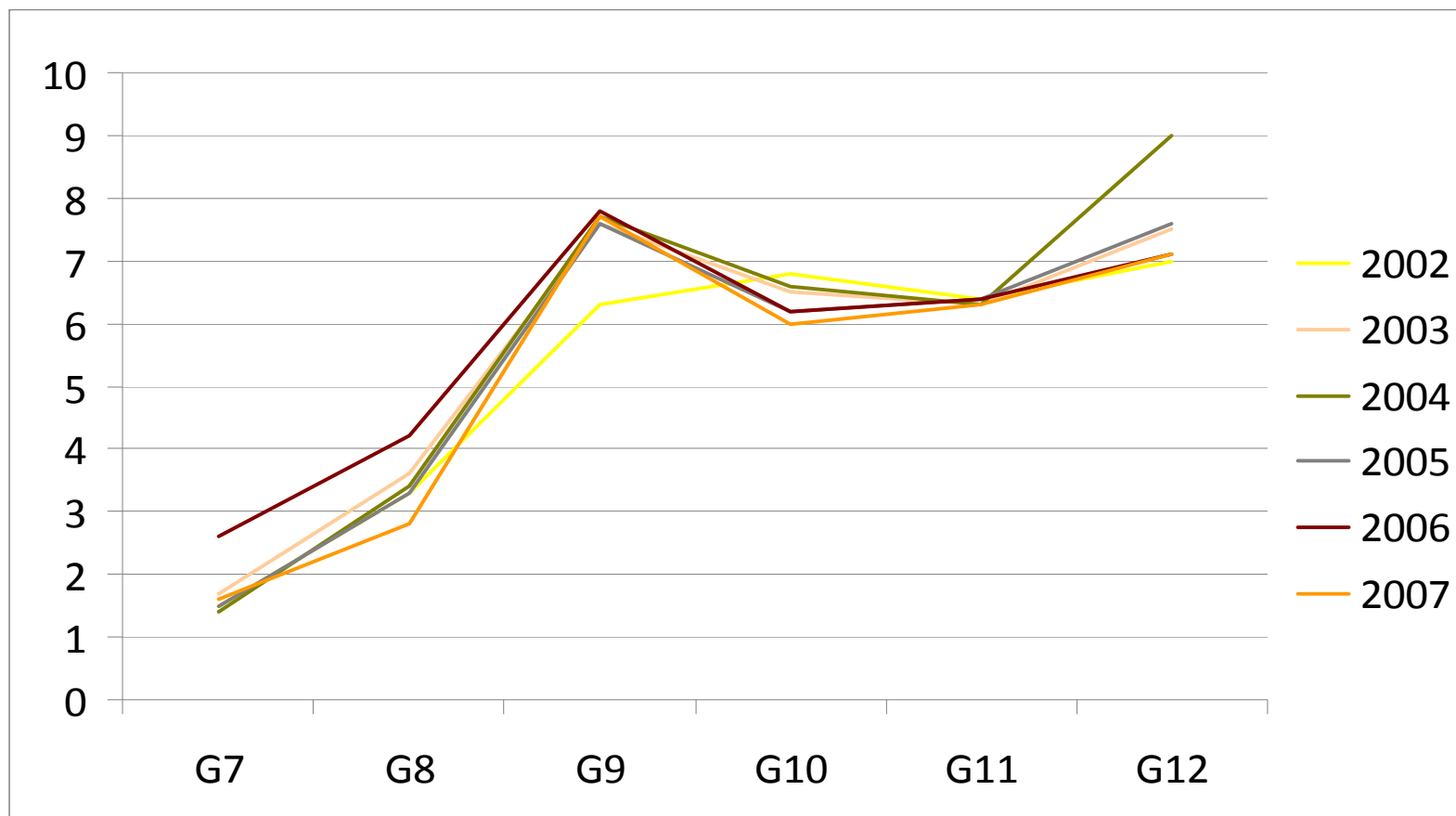
(Source: National Dropout Prevention Center, 2008)

State and National Dropout Research

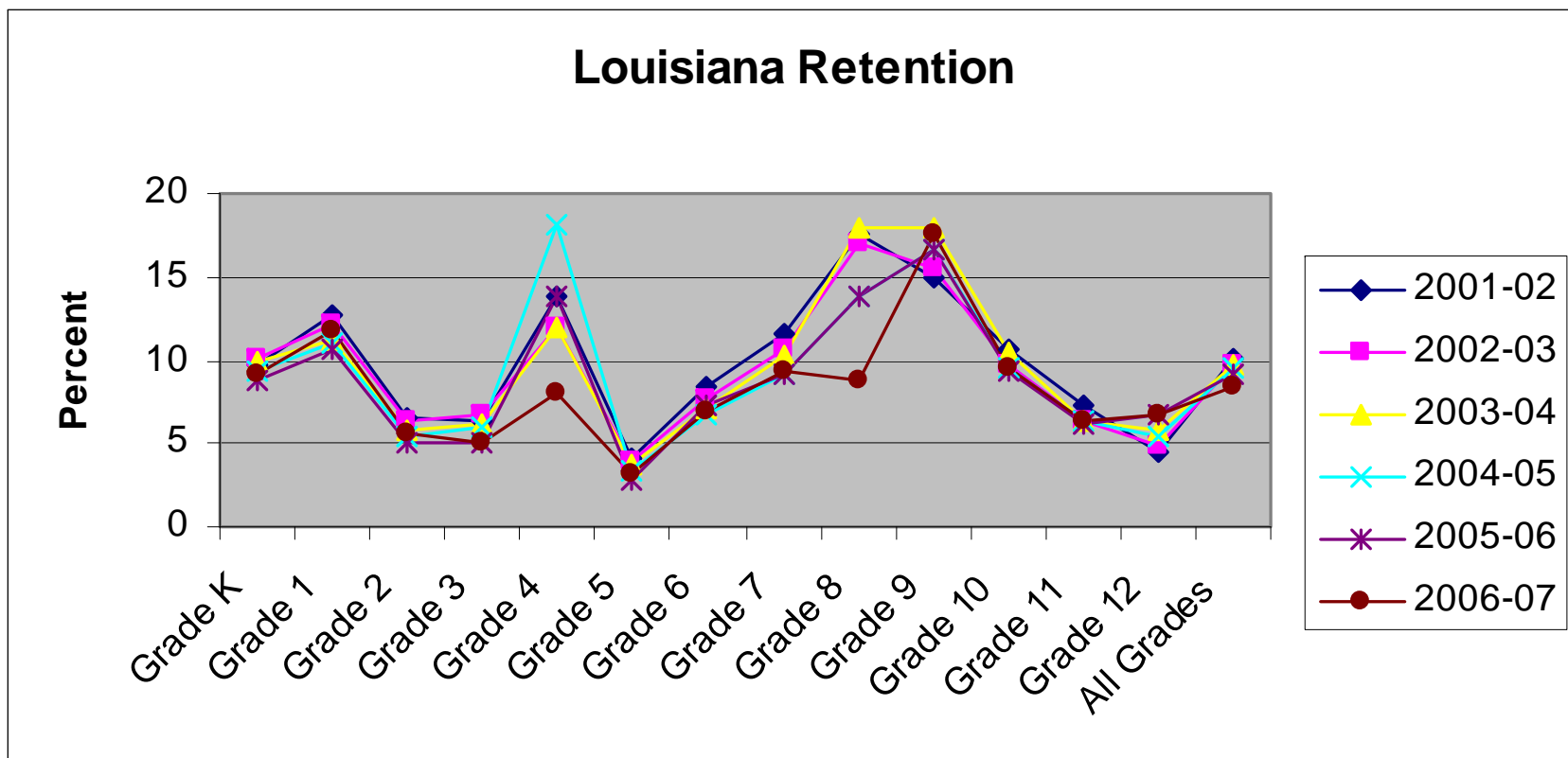
Dropouts in Louisiana (Grades 7-12)

2001-2002	2002-2003	2003-2004	2004-2005	2005-2006	2006-2007
16,614	17,801	18,186	17,192	18,665	15,914
5.0%	5.4%	5.5%	5.2%	5.6%	5.2%

Dropouts in Louisiana by Grade and Year



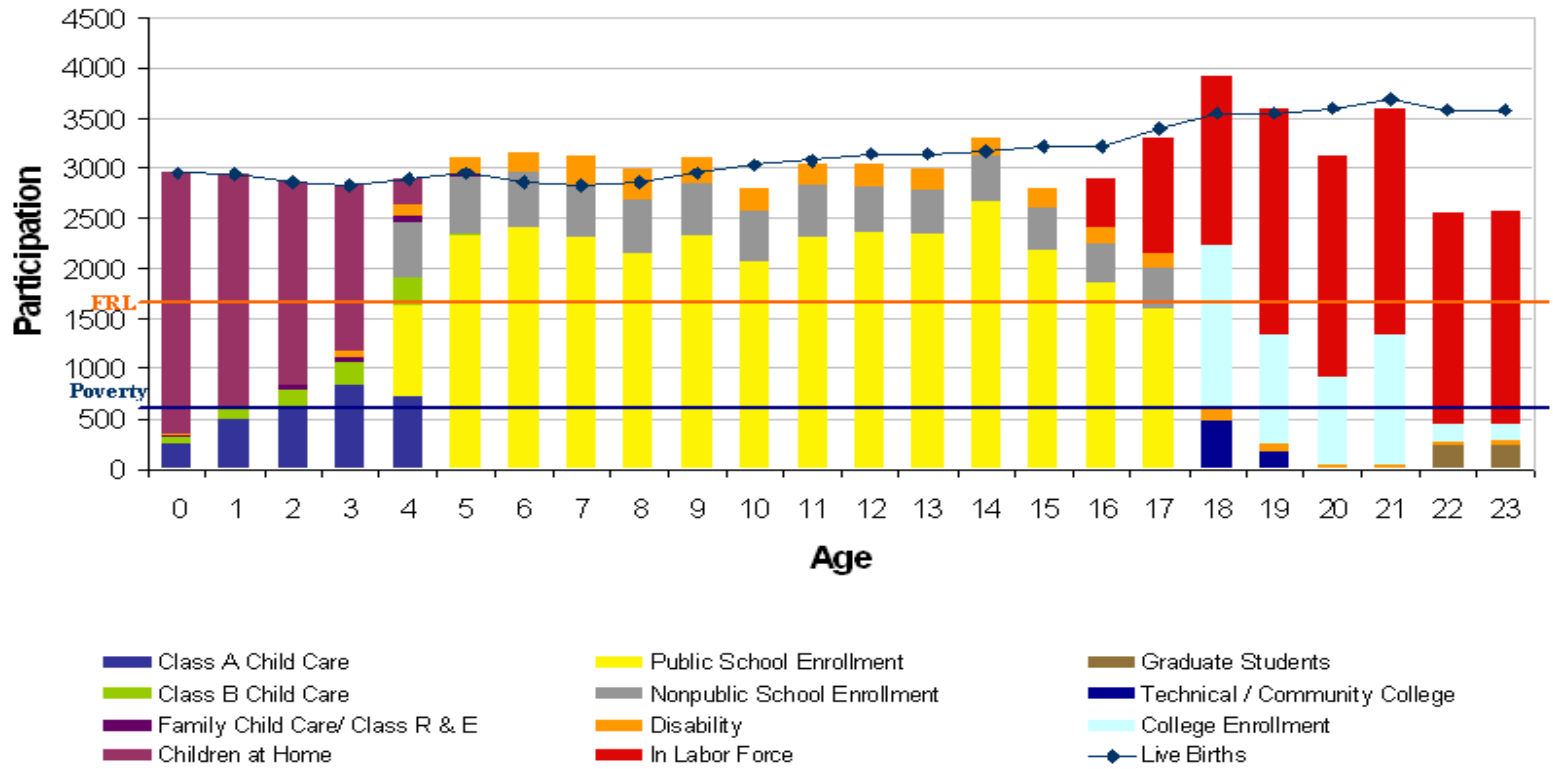
Louisiana Retention Chart



Where Are Our Children?



Activities of Lafayette Parish, Louisiana Population Age Birth Through 23



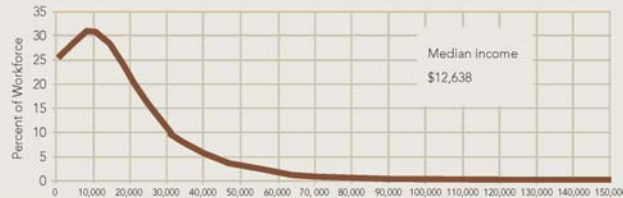
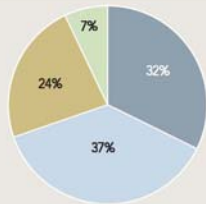
Education, Earnings, and Decent Jobs

As the amount of required occupational preparation increases in Job Zones 1 through 5, the levels of education and income of the workers who hold those jobs also steadily rise. Only 7 percent of employees in Zone 1 jobs have a bachelor's degree, compared with 77 percent in Zone 5. Annual incomes for workers in the top zone are also more than 4.5 times those found in the lowest zone.

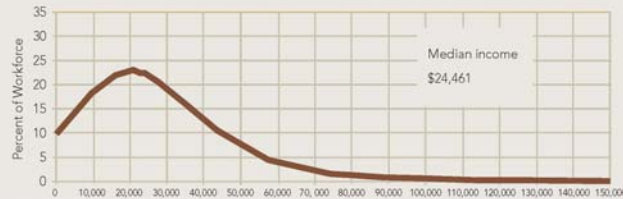
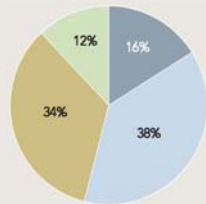
KEY: Educational Attainment

- Less than high school
- High school completor
- Some college
- B.A. degree

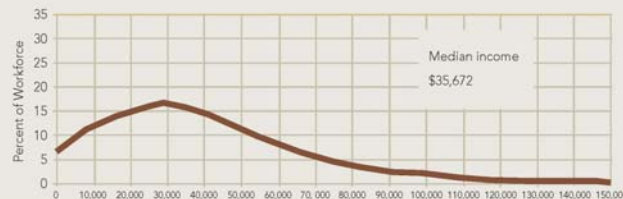
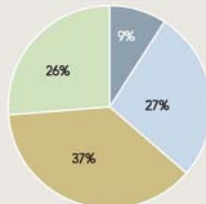
Zone 1



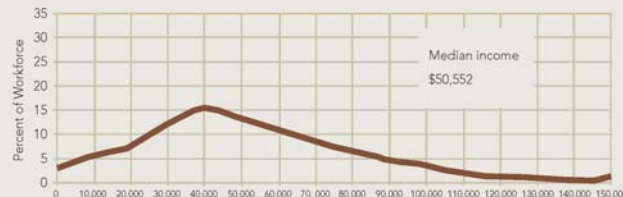
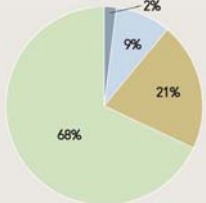
Zone 2



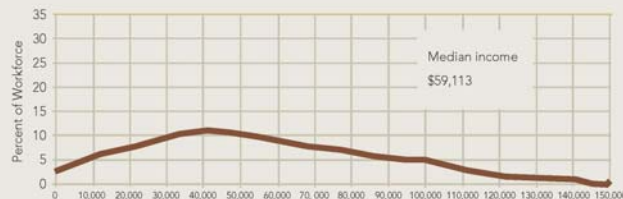
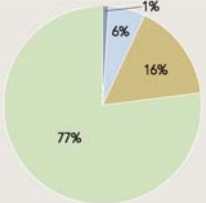
Zone 3



Zone 4



Zone 5



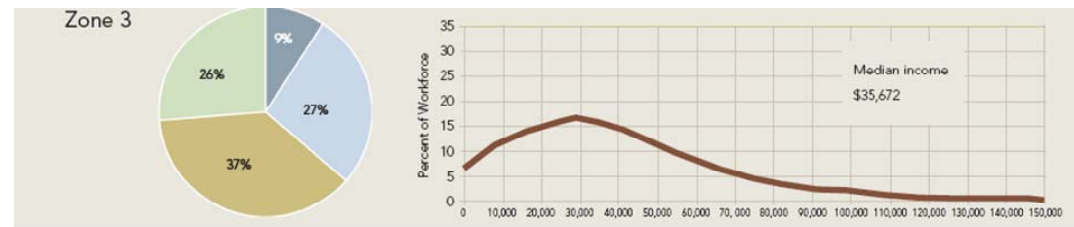
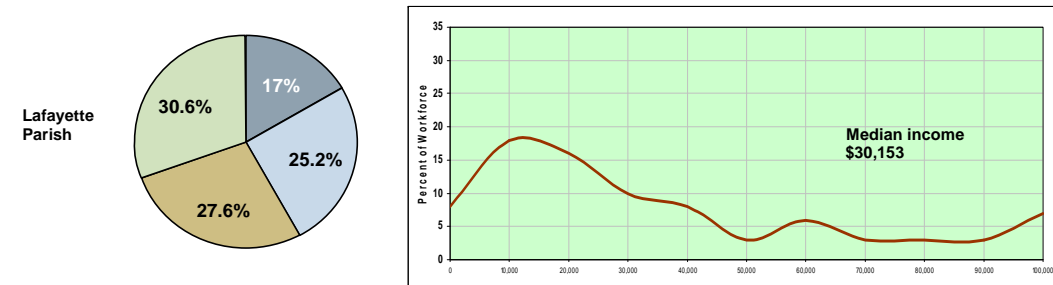
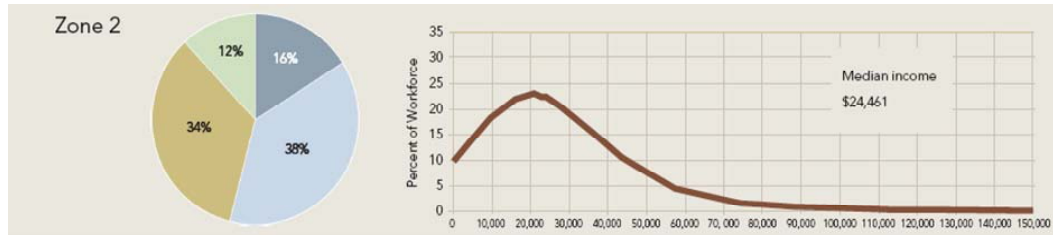
ONLINE: For detailed graduation-rate data go to www.edweek.org/go/dc07

SOURCE: EPE Research Center, 2007



Model for Education/Workforce Status Based on Educational Level and Income Level

Source: *Education Weekly*



KEY: Educational Attainment

- Less than high school
- High school completers
- Some college
- B.A. degree

Source: Editorial Projects in Education Research Center, 2007; LEDA United States Census Bureau- American Community Survey, 2006

Model for Lafayette Parish Education/Workforce Status Based on Educational Level and Income Level

How Does Louisiana Compare to the Nation?

- Louisiana ranks 44th in the nation in graduation rates.
- Louisiana contains 27 out of 211 high schools where 60% or fewer of the students progress to the 12th grade.

(Alliance of Excellent Education, 2003)

Impact of Dropouts

Impact of Dropouts

Impact on the National Economy

- Estimated loss in tax revenue is approximately \$944 billion.
(Thorstensen, 2004)
- Increased cost to welfare and crime is \$24 billion.
(Thorstensen, 2004)

Impact of Dropouts

Personal Income and Employment (National)

- The unemployment rate for dropouts is 29.8%.
(United States Department of Labor, 2003)
- In 2002, the unemployment rate for blacks between the ages of 20 and 24 who had no high school diploma was 32%.
(Alliance for Excellent Education, 2003)
- Only 40% of individuals who drop out of high school are employed.
(Alliance of Excellent Education, 2003)

Impact of Dropouts

National Crime

- 75% of state prisoners dropped out of high school.
(Harlow, 2003)
- 59% of federal prisoners dropped out of high school.
(Harlow, 2003)
- Individuals who dropped out of high school are 3.5 times more likely to be arrested than those who did not drop out of high school.
(Alliance for Excellent Education, 2003)

Impact of Dropouts in Louisiana

- 15,914 students did not graduate from LA high schools in 2007 – the lost collective lifetime earnings for these individuals is \$4.1 billion.
- LA would save \$226.7 million in health care costs over the lifetime of each class of dropouts.
- If the graduation rate of male students would increase by just 5%, Louisiana would save \$204 million in crime-related savings and additional revenue.

Source: "The High Cost of High School Dropouts," Alliance for Excellence in Education

Developing an Effective Dropout Prevention Program

Characteristics of Effective Dropout Prevention Programs



- Early Intervention
- Tutoring and Counseling
- Attendance and Behavior Monitoring
- Family Involvement
- Community Engagement
- School Engagement

Questions or Comments



The Cecil J. Picard Center
for Child Development

The Sellers Group
Architects and Engineers

Billy R. Stokes, Ed.D., M.B.A.

*Cecil J. Picard Endowed Fellow in
Child Development, Director*

337-482-1567

billy.stokes@louisiana.edu

<http://ccd.louisiana.edu>